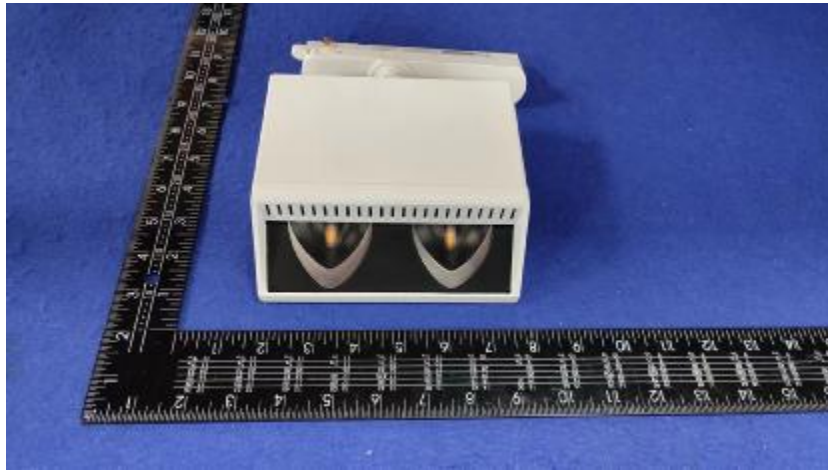


## Luminaire Photograph



Light Output Ratio:	78.2%	
Luminaire Power:	42.33 W	
SHR Nominal:	0.00	Calculated using the TM5
SHR Maximum:	1.00	fine grid method.

C Range: 0 - 360DEG  
C Interval: 30.0DEG  
Test Speed: HIGH  
Temperature: 25.3DEG  
Operators: Zoe  
Test Date: 2023-1-11

g Range: 0 - 180DEG  
g Interval: 1.0DEG  
Test System: EVERFINE GO-SPEX500\_V1 SYSTEM V2.00.416  
Humidity: 65.0%  
Test Distance: 3.160m [K=1.0000]  
Remarks: LAMP: CLU028-1204C4-303H5M3-F1 Ra:90  
REFLECTOR: AP-060D-WW  
DRIVER: PRO-UA440 1050mA  
30minutes warm-up

## LUMINOUS INTENSITY DISTRIBUTION DIAGRAM

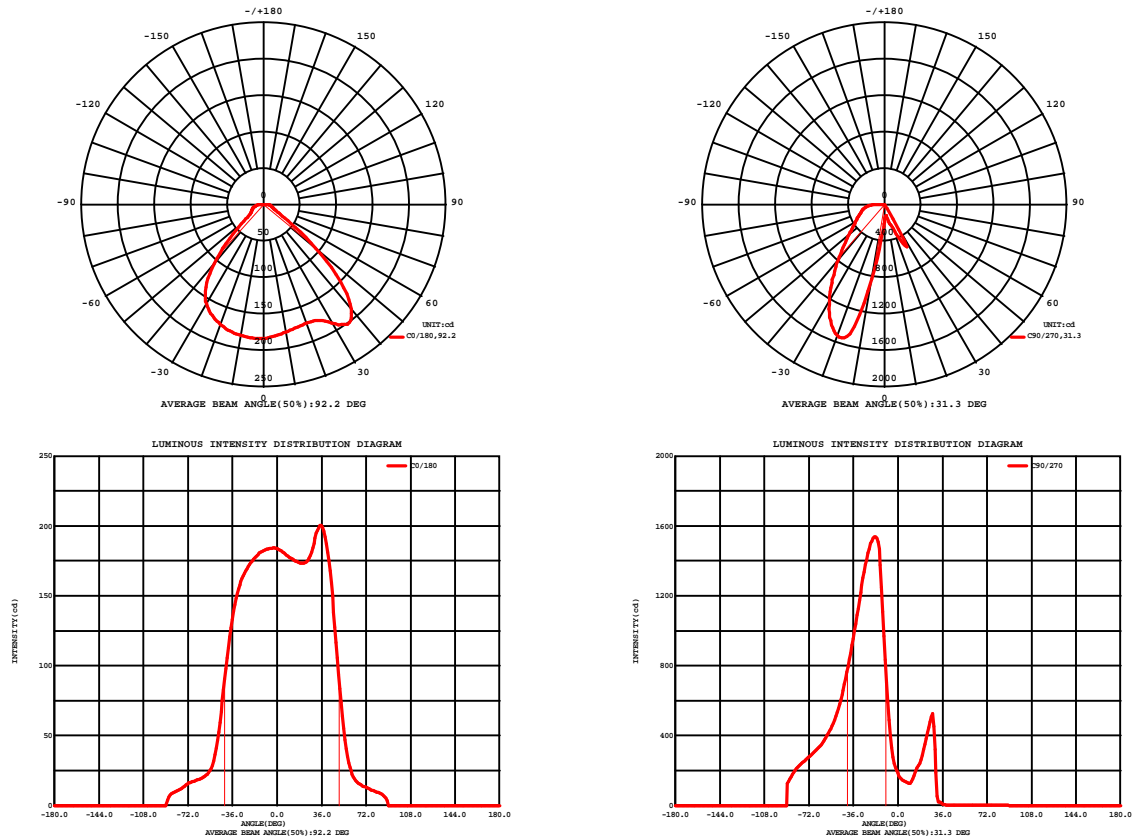


Fig. C0/C180

Fig. C90/C270

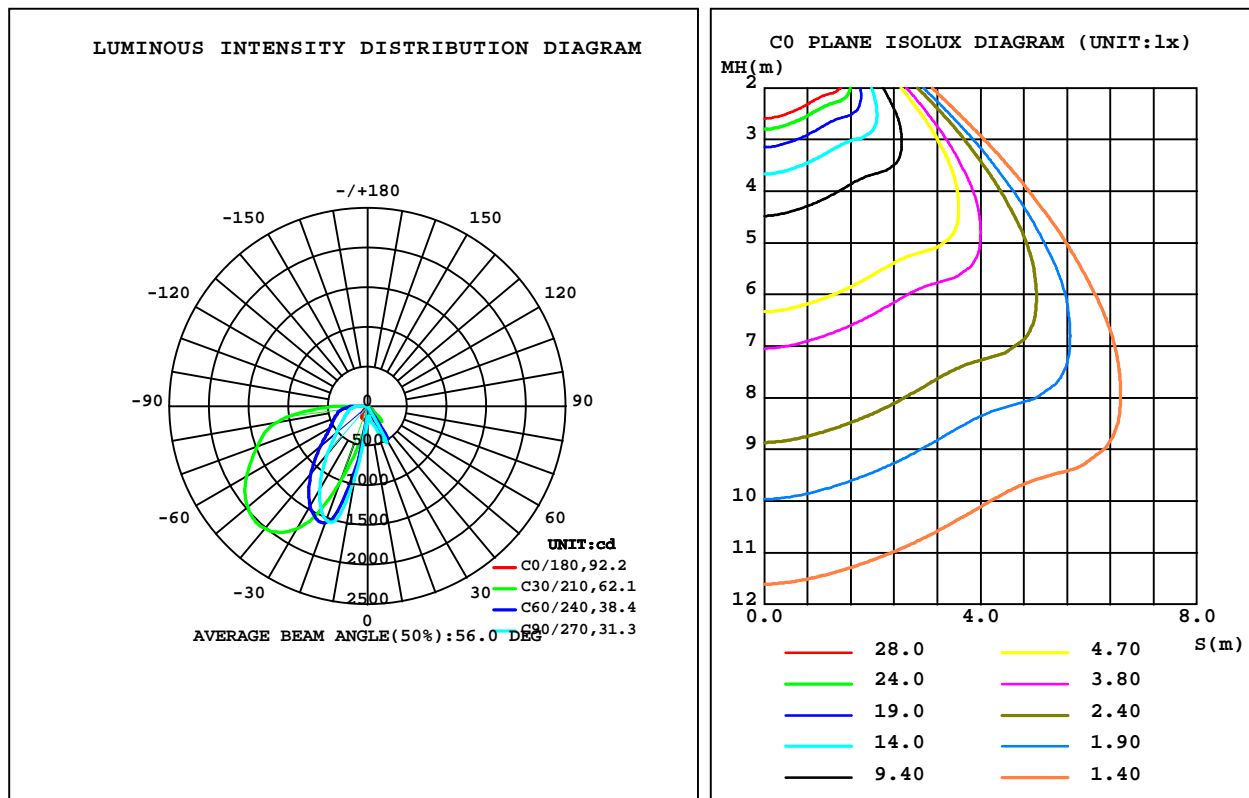
C Range: 0 - 360DEG  
C Interval: 30.0DEG  
Test Speed: HIGH  
Temperature: 25.3DEG  
Operators: Zoe  
Test Date: 2023-1-11

Range: 0 - 180DEG  
Interval: 1.0DEG  
Test System: EVERFINE GO-SPEX500\_V1 SYSTEM V2.00.416  
Humidity: 65.0%  
Test Distance: 3.160m [K=1.0000]  
Remarks: LAMP: CLU028-1204C4-303H5M3-F1 Ra: 90  
REFLECTOR: AP-060D-WW  
DRIVER: PRO-UA440 1050mA  
30minutes warm-up

## LUMINAIRE PHOTOMETRIC TEST REPORT

Test:U:220.25V I:0.1966A P:42.326W PF:0.9751 Freq:49.99Hz Lamp Flux:3632.75x1 lm		
NAME: 2119.204B	TYPE:	WEIGHT:
SPEC.:3000K	DIM.:	SERIAL No.:2301110036
MFR.: RISE	SUR.:0.005904m2	Shielding Angle:

DATA OF LAMP		PHOTOMETRIC DATA Eff: 67.09 lm/W			
MODEL	CITIZEN	I <sub>max</sub> (cd)	2206	S/MH(C0/180)	1.20
NOMINAL POWER(W)	42	LOR(%)	78.2	S/MH(C90/270)	2.45
RATED VOLTAGE(V)	220	TOTAL FLUX(lm)	2839.6	h UP,DN(C0-180)	0.0,5.4
NOMINAL FLUX(lm)	3632.75	CIE CLASS	DIRECT	h UP,DN(C180-360)	0.0,72.7
LAMPS INSIDE	1	h up(%)	0.0	CIBSE SHR NOM	0.00
TEST VOLTAGE(V)	220	h down(%)	78.2	CIBSE SHR MAX	1.00



C Range: 0 - 360DEG  
C Interval: 30.0DEG  
Test Speed: HIGH  
Temperature:25.3DEG  
Operators:Zoe  
Test Date:2023-1-11

g Range: 0 - 180DEG  
Interval: 1.0DEG  
Test System:EVERFINE GO-SPEX500\_V1 SYSTEM V2.00.416  
Humidity:65.0%  
Test Distance:3.160m [K=1.0000]  
Remarks: LAMP:CLU028-1204C4-303H5M3-F1 Ra:90  
REFLECTOR:AP-060D-WW  
DRIVER:PRO-UA440 1050mA  
30minutes warm-up

## ZONAL FLUX DIAGRAM

### ZONAL FLUX DIAGRAM:

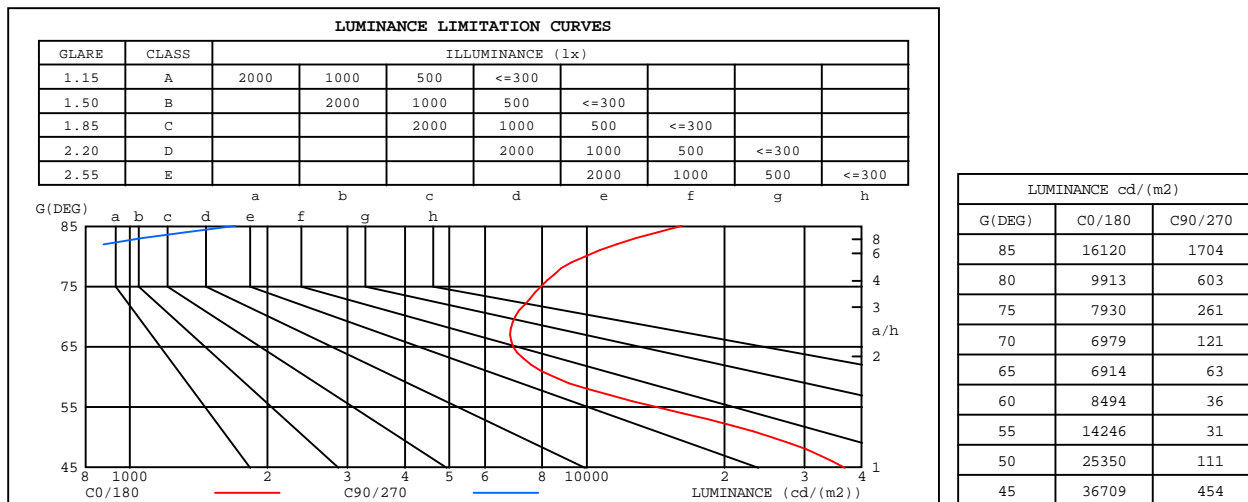
g	C0	C45	C90	C135	C180	C225	C270	C315	g	F zone	F total	%lum,lamp
10	177.6	129.0	126.7	136.5	182.5	512.7	832.9	478.9	0- 10	23.25	23.25	0.82,0.64
20	173.3	163.7	287.3	185.4	174.8	1281	1531	1323	10- 20	151.0	174.3	6.14,4.8
30	187.6	294.6	320.1	354.2	157.8	1619	1217	1739	20- 30	358.1	532.4	18.7,14.7
40	187.1	128.3	3.253	168.4	105.4	1571	793.8	1680	30- 40	461.8	994.2	35,27.4
50	93.70	49.85	0.4136	16.75	36.22	1379	509.3	1467	40- 50	474.8	1469	51.7,40.4
60	24.42	2.944	0.1054	3.054	20.08	1163	366.8	1227	50- 60	427.5	1897	66.8,52.2
70	13.73	0.4254	0.2415	0.5037	16.43	968.1	288.1	1012	60- 70	386.5	2283	80.4,62.8
80	9.898	1.311	0.6096	1.514	10.90	763.0	226.8	823.3	70- 80	339.1	2622	92.3,72.2
90	0	0	0	0	0	0	0	0	80- 90	217.4	2840	100,78.2
100	0	0	0	0	0	0	0	0	90-100	0	2840	100,78.2
110	0	0	0	0	0	0	0	0	100-110	0	2840	100,78.2
120	0	0	0	0	0	0	0	0	110-120	0	2840	100,78.2
130	0	0	0	0	0	0	0	0	120-130	0	2840	100,78.2
140	0	0	0	0	0	0	0	0	130-140	0	2840	100,78.2
150	0	0	0	0	0	0	0	0	140-150	0	2840	100,78.2
160	0	0	0	0	0	0	0	0	150-160	0	2840	100,78.2
170	0	0	0	0	0	0	0	0	160-170	0	2840	100,78.2
180	0	0	0	0	0	0	0	0	170-180	0	2840	100,78.2
DEG	LUMINOUS INTENSITY:cd									UNIT:lm		

C Range: 0 - 360DEG  
C Interval: 30.0DEG  
Test Speed: HIGH  
Temperature:25.3DEG  
Operators:Zoe  
Test Date:2023-1-11

g Range: 0 - 180DEG  
Interval: 1.0DEG  
Test System:EVERFINE GO-SPEX500\_V1 SYSTEM V2.00.416  
Humidity:65.0%  
Test Distance:3.160m [K=1.0000]  
Remarks: LAMP:CLU028-1204C4-303H5M3-F1 Ra:90  
REFLECTOR:AP-060D-WW  
DRIVER:PRO-UA440 1050mA  
30minutes warm-up

### LUMINANCE LIMITATION CURVES

Test:U:220.25V I:0.1966A P:42.326W PF:0.9751 Freq:49.99Hz Lamp Flux:3632.75x1 lm		
NAME: 2119.204B	TYPE:	WEIGHT:
SPEC.:3000K	DIM.:	SERIAL No.:2301110036
MFR.: RISE	SUR.:0.005904m2	Shielding Angle:



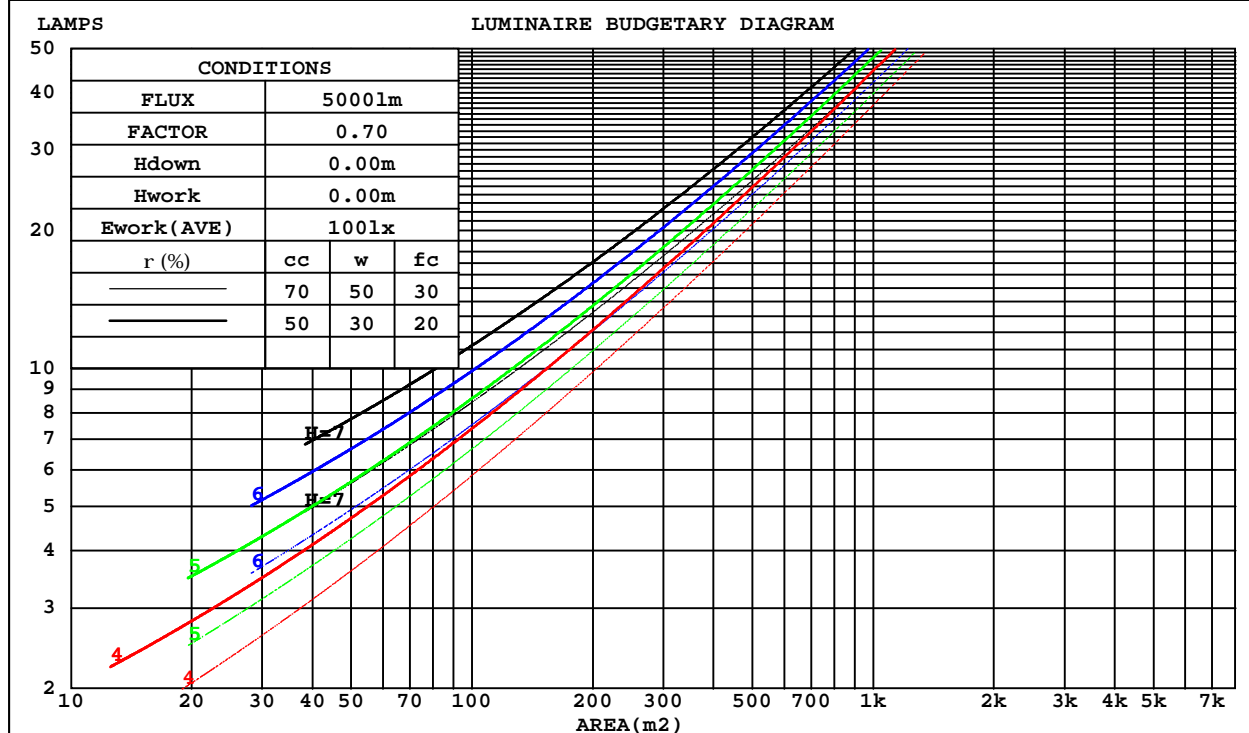
C Range: 0 - 360DEG  
C Interval: 30.0DEG  
Test Speed: HIGH  
Temperature:25.3DEG  
Operators:Zoe  
Test Date:2023-1-11

G Range: 0 - 180DEG  
G Interval: 1.0DEG  
Test System:EVERFINE GO-SPEX500\_V1 SYSTEM V2.00.416  
Humidity:65.0%  
Test Distance:3.160m [K=1.0000]  
Remarks: LAMP:CLU028-1204C4-303H5M3-F1 Ra:90  
REFLECTOR:AP-060D-WW  
DRIVER:PRO-UA440 1050mA  
30minutes warm-up

## CU AND LUMINAIRE BUDGETARY ESTIMATE DIAGRAM

Test:U:220.25V I:0.1966A P:42.326W PF:0.9751 Freq:49.99Hz Lamp Flux:3632.75x1 lm		
NAME: 2119.204B	TYPE:	WEIGHT:
SPEC.:3000K	DIM.:	SERIAL No.:2301110036
MFR.: RISE	SUR.:0.005904m2	Shielding Angle:

rcc	80%			70%			50%			30%			10%			0
rw	50%	30%	10%	50%	30%	10%	50%	30%	10%	50%	30%	10%	50%	30%	10%	0
r fc	20%			20%			20%			20%			20%			0
RCR	RCR:Room Cavity Ratio															



C Range: 0 - 360DEG  
C Interval: 30.0DEG  
Test Speed: HIGH  
Temperature:25.3DEG  
Operators:Zoe  
Test Date:2023-1-11

g Range: 0 - 180DEG  
Interval: 1.0DEG  
Test System:EVERFINE GO-SPEX500\_V1 SYSTEM V2.00.416  
Humidity:65.0%  
Test Distance:3.160m [K=1.0000]  
Remarks: LAMP:CLU028-1204C4-303H5M3-F1 Ra:90  
REFLECTOR:AP-060D-WW  
DRIVER:PRO-UA440 1050mA  
30minutes warm-up

### WEC AND CCEC

Test:U:220.25V I:0.1966A P:42.326W PF:0.9751 Freq:49.99Hz Lamp Flux:3632.75x1 lm		
NAME: 2119.204B	TYPE:	WEIGHT:
SPEC.:3000K	DIM.:	SERIAL No.:2301110036
MFR.: RISE	SUR.:0.005904m2	Shielding Angle:

rcc	80%			70%			50%			30%			10%			0
rw	50%	30%	10%	50%	30%	10%	50%	30%	10%	50%	30%	10%	50%	30%	10%	0
rfc	20%			20%			20%			20%			20%			0
RCR	RCR:Room Cavity Ratio Wall Exitance Coefficients(WEC)															
0.0																
1.0	.315	.179	.057	.309	.176	.056	.298	.171	.055	.289	.166	.053	.279	.162	.052	
2.0	.275	.151	.046	.270	.149	.046	.260	.145	.045	.251	.141	.044	.243	.138	.043	
3.0	.245	.130	.039	.240	.129	.039	.232	.125	.038	.224	.123	.038	.216	.120	.037	
4.0	.220	.114	.034	.216	.113	.033	.209	.111	.033	.202	.108	.033	.195	.106	.032	
5.0	.200	.102	.030	.196	.101	.029	.190	.099	.029	.184	.097	.029	.178	.095	.029	
6.0	.183	.092	.026	.180	.091	.026	.174	.089	.026	.169	.088	.026	.163	.086	.026	
7.0	.169	.084	.024	.166	.083	.024	.161	.081	.023	.156	.080	.023	.151	.079	.023	
8.0	.157	.077	.022	.154	.076	.021	.149	.075	.021	.145	.073	.021	.141	.072	.021	
9.0	.146	.071	.020	.144	.070	.020	.139	.069	.020	.135	.068	.019	.132	.067	.019	
10.0	.137	.065	.018	.135	.065	.018	.131	.064	.018	.127	.063	.018	.124	.062	.018	

rcc	80%			70%			50%			30%			10%			0
rw	50%	30%	10%	50%	30%	10%	50%	30%	10%	50%	30%	10%	50%	30%	10%	0
rfc	20%			20%			20%			20%			20%			0
RCR	RCR:Room Cavity Ratio Ceiling Cavity Exitance Coefficients(CCEC)															
0.0	.149	.149	.149	.127	.127	.127	.087	.087	.087	.050	.050	.050	.016	.016	.016	
1.0	.146	.121	.099	.125	.104	.085	.085	.072	.059	.049	.041	.034	.016	.013	.011	
2.0	.141	.103	.071	.121	.089	.061	.083	.061	.043	.048	.036	.025	.015	.012	.008	
3.0	.135	.090	.053	.116	.077	.046	.079	.054	.032	.046	.031	.019	.015	.010	.006	
4.0	.129	.080	.042	.111	.069	.036	.076	.048	.026	.044	.028	.015	.014	.009	.005	
5.0	.123	.072	.034	.105	.062	.029	.073	.043	.021	.042	.025	.012	.014	.008	.004	
6.0	.117	.065	.028	.100	.056	.025	.069	.040	.017	.040	.023	.010	.013	.008	.003	
7.0	.111	.060	.024	.095	.052	.021	.066	.036	.015	.038	.021	.009	.012	.007	.003	
8.0	.106	.055	.021	.091	.048	.018	.063	.034	.013	.037	.020	.008	.012	.007	.003	
9.0	.100	.052	.019	.087	.045	.016	.060	.031	.011	.035	.019	.007	.011	.006	.002	
10.0	.096	.048	.017	.082	.042	.014	.057	.029	.010	.033	.017	.006	.011	.006	.002	

C Range: 0 - 360DEG  
C Interval: 30.0DEG  
Test Speed: HIGH  
Temperature:25.3DEG  
Operators:Zoe  
Test Date:2023-1-11

g Range: 0 - 180DEG  
Interval: 1.0DEG  
Test System:EVERFINE GO-SPEX500\_V1 SYSTEM V2.00.416  
Humidity:65.0%  
Test Distance:3.160m [K=1.0000]  
Remarks: LAMP:CLU028-1204C4-303H5M3-F1 Ra:90  
REFLECTOR:AP-060D-WW  
DRIVER:PRO-UA440 1050mA  
30minutes warm-up

## UGR(Unified Glare Rating) Table

Test:U:220.25V I:0.1966A P:42.326W PF:0.9751 Freq:49.99Hz Lamp Flux:3632.75x1 lm											
NAME: 2119.204B					TYPE:			WEIGHT:			
SPEC.:3000K					DIM.:			SERIAL No.:2301110036			
MFR.: RISE					SUR.:0.005904m2			Shielding Angle:			
ceiling/cavity	0.7	0.7	0.5	0.5	0.3	0.7	0.7	0.5	0.5	0.3	
walls	0.5	0.3	0.5	0.3	0.3	0.5	0.3	0.5	0.3	0.3	
working plane	0.2	0.2	0.2	0.2	0.2	0.2	0.2	0.2	0.2	0.2	
Room dimensions		Viewed crosswise					Viewed endwise				
x = 2H y = 2H	16.3	18.0	16.6	18.2	18.4	9.6	11.3	9.9	11.5	11.7	
	3H	16.2	17.8	16.5	18.0	18.3	9.4	10.9	9.7	11.2	11.4
	4H	16.2	17.7	16.6	18.0	18.3	9.2	10.7	9.6	11.0	11.3
	6H	16.4	17.8	16.7	18.1	18.4	9.1	10.6	9.5	10.8	11.1
	8H	16.5	17.9	16.9	18.2	18.5	9.1	10.5	9.4	10.8	11.1
	12H	16.7	18.1	17.1	18.4	18.7	9.0	10.4	9.4	10.7	11.0
4H	2H	15.9	17.4	16.3	17.7	18.0	9.3	10.8	9.6	11.1	11.3
	3H	15.8	17.2	16.2	17.5	17.8	9.1	10.4	9.4	10.7	11.0
	4H	15.9	17.1	16.3	17.5	17.8	9.0	10.2	9.3	10.5	10.9
	6H	16.1	17.2	16.5	17.6	18.0	8.9	10.0	9.3	10.3	10.7
	8H	16.4	17.4	16.8	17.8	18.2	8.8	9.9	9.3	10.3	10.7
	12H	16.8	17.7	17.2	18.1	18.5	8.9	9.8	9.3	10.2	10.6
8H	4H	15.7	16.8	16.2	17.2	17.6	8.8	9.9	9.2	10.2	10.6
	6H	16.0	16.9	16.5	17.3	17.8	8.8	9.7	9.2	10.1	10.5
	8H	16.3	17.1	16.8	17.5	18.0	8.8	9.6	9.3	10.0	10.5
	12H	16.9	17.6	17.3	18.0	18.5	8.9	9.6	9.4	10.0	10.5
12H	4H	15.7	16.7	16.1	17.1	17.5	8.8	9.8	9.2	10.2	10.6
	6H	16.0	16.8	16.4	17.2	17.7	8.8	9.6	9.3	10.0	10.5
	8H	16.3	17.0	16.8	17.4	17.9	8.8	9.5	9.3	10.0	10.5
Variations with the observer position at spacings:											
S = 1.0H	+ 3.3 / - 3.8					+ 3.8 / - 7.5					
1.5H	+ 2.3 / - 5.6					+ 8.6 / - 7.3					
2.0H	+ 5.5 / - 5.3					+ 3.7 / - 1.4					

CIE Pub.117, 3633 lm Total Lamp Luminous Flux Corrected ( $8\log(F/F_0) = 4.5$ )  
Area: 0.005904 m2

C Range: 0 - 360DEG  
C Interval: 30.0DEG  
Test Speed: HIGH  
Temperature:25.3DEG  
Operators:Zoe  
Test Date:2023-1-11

g Range: 0 - 180DEG  
g Interval: 1.0DEG  
Test System:EVERFINE GO-SPEX500\_V1 SYSTEM V2.00.416  
Humidity:65.0%  
Test Distance:3.160m [K=1.0000]  
Remarks: LAMP:CLU028-1204C4-303H5M3-F1 Ra:90  
REFLECTOR:AP-060D-WW  
DRIVER:PRO-UA440 1050mA  
30minutes warm-up



### UTILIZATION FACTORS TABLE

Test:U:220.25V I:0.1966A P:42.326W PF:0.9751 Freq:49.99Hz Lamp Flux:3632.75x1 lm		
NAME: 2119.204B	TYPE:	WEIGHT:
SPEC.:3000K	DIM.:	SERIAL No.:2301110036
MFR.: RISE	SUR.:0.005904m2	Shielding Angle:

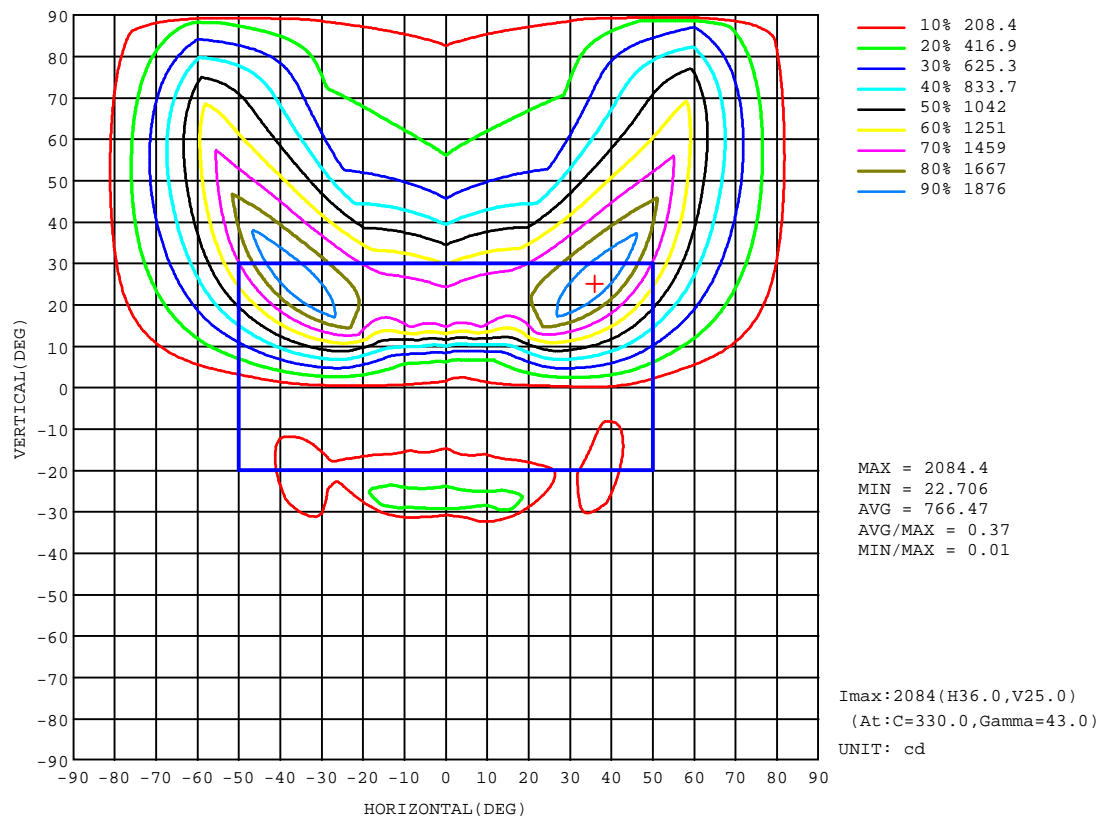
REFLECTANCE										
Ceiling	0.8	0.8	0.8	0.7	0.7	0.7	0.5	0.5	0.5	0
Walls	0.7	0.5	0.3	0.7	0.5	0.3	0.7	0.5	0.3	0
Working plane	0.2	0.2	0.2	0.2	0.2	0.2	0.2	0.2	0.2	0
ROOM INDEX	UTILIZATION FACTORS(PERCENT) $k(RI) \times RCR = 5$									
k = 0.60	41	31	25	40	31	25	39	31	25	20
0.80	48	38	32	48	38	32	46	37	32	26
1.00	55	45	38	54	44	38	52	46	38	32
1.25	60	51	44	59	50	44	57	49	43	37
1.50	64	55	49	63	54	48	60	53	48	41
2.00	70	62	56	68	61	55	65	59	54	47
2.50	73	66	60	72	65	59	68	63	58	51
3.00	76	70	64	74	68	63	71	66	62	54
4.00	80	74	70	78	73	68	74	70	66	59
5.00	82	77	73	80	76	72	76	73	69	62
ROOM INDEX	UF(total)									Direct
According to DIN EN 13032-2 2004			Suspended					SHRNOM = 1.25		

C Range: 0 - 360DEG  
 C Interval: 30.0DEG  
 Test Speed: HIGH  
 Temperature:25.3DEG  
 Operators:Zoe  
 Test Date:2023-1-11

g Range: 0 - 180DEG  
 g Interval: 1.0DEG  
 Test System:EVERFINE GO-SPEX500\_V1 SYSTEM V2.00.416  
 Humidity:65.0%  
 Test Distance:3.160m [K=1.0000]  
 Remarks: LAMP:CLU028-1204C4-303H5M3-F1 Ra:90  
 REFLECTOR:AP-060D-WW  
 DRIVER:PRO-UA440 1050mA  
 30minutes warm-up

## ISOCANDELA DIAGRAM

Test:U:220.25V I:0.1966A P:42.326W PF:0.9751 Freq:49.99Hz Lamp Flux:3632.75x1 lm		
NAME: 2119.204B	TYPE:	WEIGHT:
SPEC.:3000K	DIM.:	SERIAL No.:2301110036
MFR.: RISE	SUR.:0.005904m2	Shielding Angle:

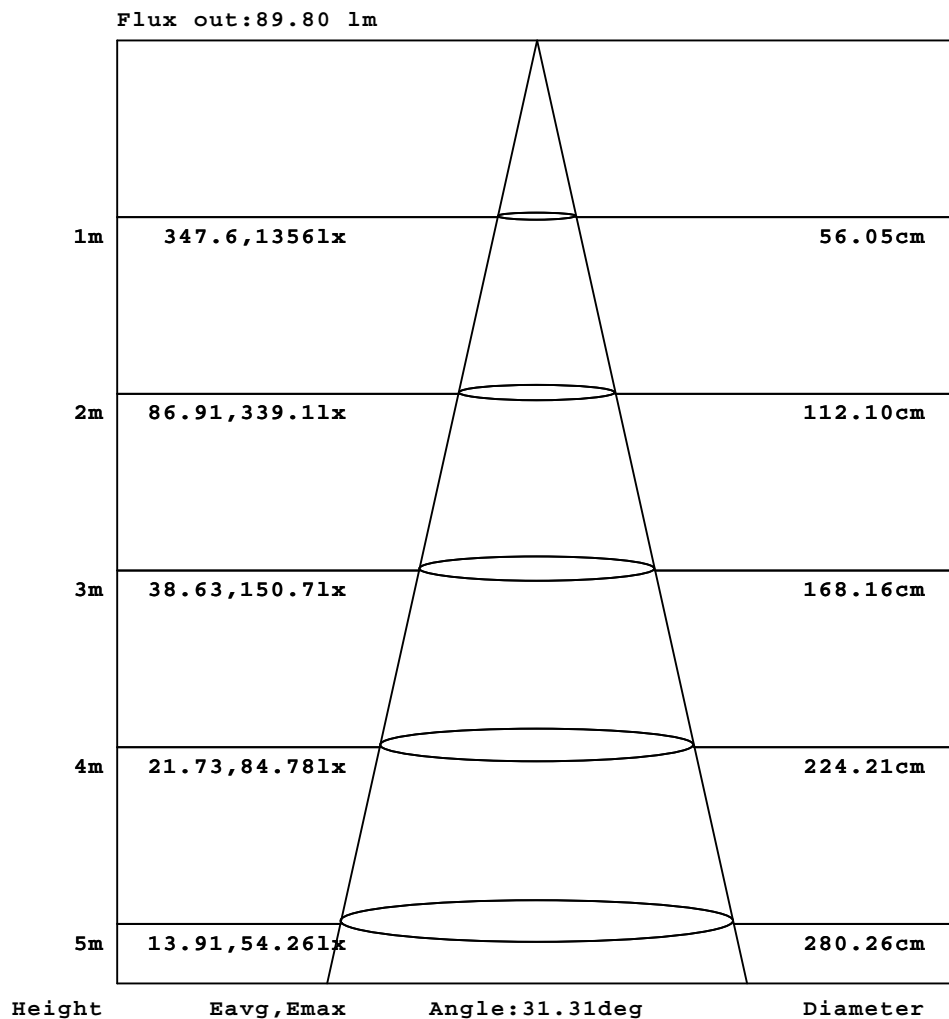


C Range: 0 - 360DEG  
C Interval: 30.0DEG  
Test Speed: HIGH  
Temperature:25.3DEG  
Operators:Zoe  
Test Date:2023-1-11

deg Range: 0 - 180DEG  
Interval: 1.0DEG  
Test System:EVERFINE GO-SPEX500\_V1 SYSTEM V2.00.416  
Humidity:65.0%  
Test Distance:3.160m [K=1.0000]  
Remarks: LAMP:CLU028-1204C4-303H5M3-F1 Ra:90  
REFLECTOR:AP-060D-WW  
DRIVER:PRO-UA440 1050mA  
30minutes warm-up

## AAI Figure

Test:U:220.25V I:0.1966A P:42.326W PF:0.9751 Freq:49.99Hz Lamp Flux:3632.75x1 lm		
NAME: 2119.204B	TYPE:	WEIGHT:
SPEC.:3000K	DIM.:	SERIAL No.:2301110036
MFR.: RISE	SUR.:0.005904m2	Shielding Angle:



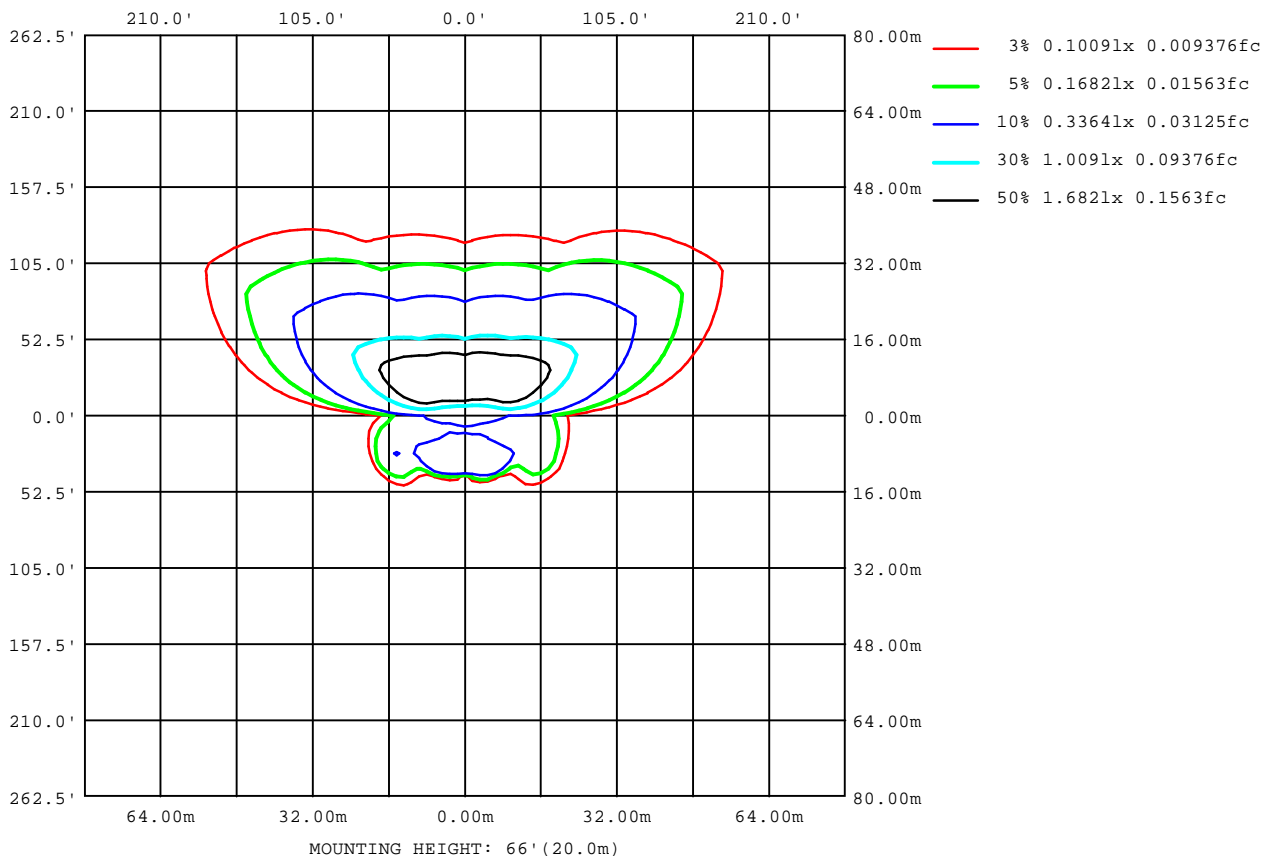
Note: The Curves indicate the illuminated area and the average illumination when the luminaire is at different distance.

C Range: 0 - 360DEG  
C Interval: 30.0DEG  
Test Speed: HIGH  
Temperature: 25.3DEG  
Operators: Zoe  
Test Date: 2023-1-11

g Range: 0 - 180DEG  
Interval: 1.0DEG  
Test System: EVERFINE GO-SPEX500\_V1 SYSTEM V2.00.416  
Humidity: 65.0%  
Test Distance: 3.160m [K=1.0000]  
Remarks: LAMP: CLU028-1204C4-303H5M3-F1 Ra:90  
REFLECTOR: AP-060D-WW  
DRIVER: PRO-UA440 1050mA  
30minutes warm-up

## ISOLUX DIAGRAM

Test:U:220.25V I:0.1966A P:42.326W PF:0.9751 Freq:49.99Hz Lamp Flux:3632.75x1 lm		
NAME: 2119.204B	TYPE:	WEIGHT:
SPEC.:3000K	DIM.:	SERIAL No.:2301110036
MFR.: RISE	SUR.:0.005904m2	Shielding Angle:



C Range: 0 - 360DEG  
C Interval: 30.0DEG  
Test Speed: HIGH  
Temperature:25.3DEG  
Operators:Zoe  
Test Date:2023-1-11

g Range: 0 - 180DEG  
Interval: 1.0DEG  
Test System:EVERFINE GO-SPEX500\_V1 SYSTEM V2.00.416  
Humidity:65.0%  
Test Distance:3.160m [K=1.0000]  
Remarks: LAMP:CLU028-1204C4-303H5M3-F1 Ra:90  
REFLECTOR:AP-060D-WW  
DRIVER:PRO-UA440 1050mA  
30minutes warm-up

## LED Avg.L Report

Test:U:220.25V I:0.1966A P:42.326W PF:0.9751 Freq:49.99Hz Lamp Flux:3632.75x1 lm		
NAME: 2119.204B	TYPE:	WEIGHT:
SPEC.:3000K	DIM.:	SERIAL No.:2301110036
MFR.: RISE	SUR.:0.005904m2	Shielding Angle:

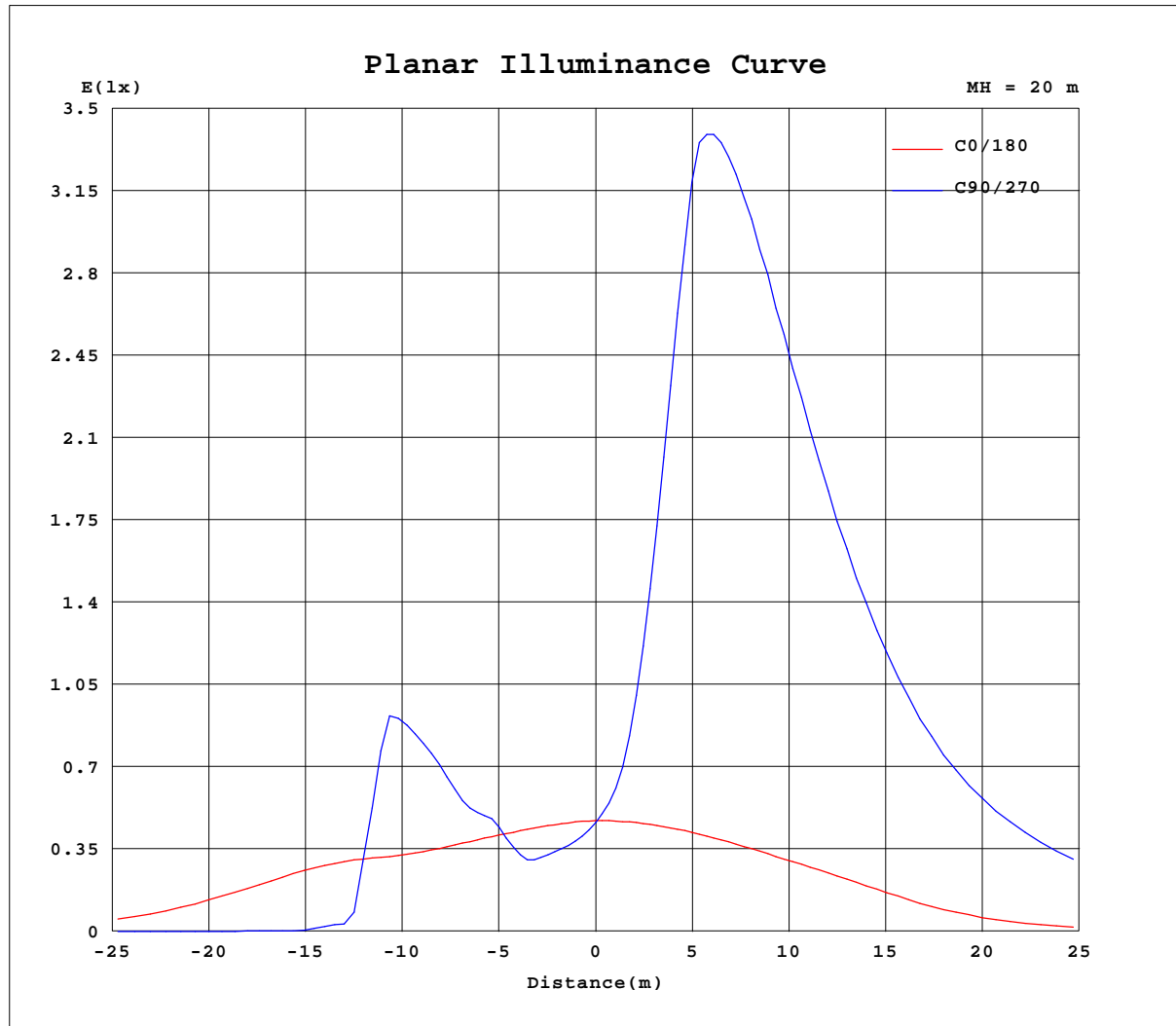
AvgL	cd/m2
L_0~180(65)av	6968
L_0~180(75)av	8260
L_0~180(85)av	16035
L_90~270(65)av	64653
L_90~270(75)av	84184
L_90~270(85)av	172547
L_45(65)av	241715
L_45(75)av	328299
L_45(85)av	632078

Standard: GB/T 29293-2012

C Range: 0 - 360DEG  
C Interval: 30.0DEG  
Test Speed: HIGH  
Temperature:25.3DEG  
Operators:Zoe  
Test Date:2023-1-11

g Range: 0 - 180DEG  
g Interval: 1.0DEG  
Test System:EVERFINE GO-SPEX500\_V1 SYSTEM V2.00.416  
Humidity:65.0%  
Test Distance:3.160m [K=1.0000]  
Remarks: LAMP:CLU028-1204C4-303H5M3-F1 Ra:90  
REFLECTOR:AP-060D-WW  
DRIVER:PRO-UA440 1050mA  
30minutes warm-up

## Planar Illuminance Curve



C Range: 0 - 360DEG  
 C Interval: 30.0DEG  
 Test Speed: HIGH  
 Temperature: 25.3DEG  
 Operators: Zoe  
 Test Date: 2023-1-11

g Range: 0 - 180DEG  
 g Interval: 1.0DEG  
 Test System: EVERFINE GO-SPEX500\_V1 SYSTEM V2.00.416  
 Humidity: 65.0%  
 Test Distance: 3.160m [K=1.0000]  
 Remarks: LAMP: CLU028-1204C4-303H5M3-F1 Ra:90  
 REFLECTOR: AP-060D-WW  
 DRIVER: PRO-UA440 1050mA  
 30minutes warm-up

## LUMINOUS DISTRIBUTION INTENSITY DATA

Test:U:220.25V I:0.1966A P:42.326W PF:0.9751 Freq:49.99Hz Lamp Flux:3632.75x1 lm		
NAME: 2119.204B	TYPE:	WEIGHT:
SPEC.:3000K	DIM.:	SERIAL No.:2301110036
MFR.: RISE	SUR.:0.005904m2	Shielding Angle:

Table--1

UNIT: cd

C(°) g (°)	0	30	60	90	120	150	180	210	240	270	300	330						
0	184	184	184	184	184	184	184	184	184	184	184	184						
5	181	153	143	141	148	160	184	234	298	332	278	220						
10	178	134	124	127	130	143	183	354	673	833	645	309						
15	175	120	159	210	183	128	180	606	1261	1468	1290	551						
20	173	104	224	287	250	120	175	1002	1563	1531	1672	966						
25	175	107	327	446	381	140	168	1480	1560	1404	1674	1527						
30	188	132	459	320	519	186	158	1781	1456	1217	1560	1922						
35	200	177	170	15.4	116	254	139	1942	1304	1003	1384	2106						
40	187	236	19.9	3.25	9.15	331	105	2020	1117	794	1181	2191						
45	149	251	4.43	1.87	4.61	268	67.0	2028	940	634	988	2200						
50	93.7	96.6	2.60	0.41	2.45	31.4	36.2	1978	773	509	811	2137						
55	47.0	18.3	0.40	0.10	0.15	8.42	23.4	1891	643	425	679	2028						
60	24.4	5.72	0.14	0.11	0.15	6.03	20.1	1764	556	367	581	1888						
65	16.8	3.31	0.19	0.15	0.20	2.33	18.0	1618	497	322	510	1729						
70	13.7	0.53	0.32	0.24	0.33	0.68	16.4	1481	450	288	459	1578						
75	11.8	0.98	0.57	0.39	0.58	1.25	13.4	1354	407	257	414	1446						
80	9.90	1.70	0.92	0.61	0.94	2.10	10.9	1163	359	227	366	1291						
85	8.08	2.63	1.37	0.86	1.38	3.19	8.42	793	280	177	291	979						
90	0.00	0.00	0.00	0.00	0.00	0.00	0.00	0.00	0.00	0.00	0.00	0.00						
95	0.00	0.00	0.00	0.00	0.00	0.00	0.00	0.00	0.00	0.00	0.00	0.00						
100	0.00	0.00	0.00	0.00	0.00	0.00	0.00	0.00	0.00	0.00	0.00	0.00						
105	0.00	0.00	0.00	0.00	0.00	0.00	0.00	0.00	0.00	0.00	0.00	0.00						
110	0.00	0.00	0.00	0.00	0.00	0.00	0.00	0.00	0.00	0.00	0.00	0.00						
115	0.00	0.00	0.00	0.00	0.00	0.00	0.00	0.00	0.00	0.00	0.00	0.00						
120	0.00	0.00	0.00	0.00	0.00	0.00	0.00	0.00	0.00	0.00	0.00	0.00						
125	0.00	0.00	0.00	0.00	0.00	0.00	0.00	0.00	0.00	0.00	0.00	0.00						
130	0.00	0.00	0.00	0.00	0.00	0.00	0.00	0.00	0.00	0.00	0.00	0.00						
135	0.00	0.00	0.00	0.00	0.00	0.00	0.00	0.00	0.00	0.00	0.00	0.00						
140	0.00	0.00	0.00	0.00	0.00	0.00	0.00	0.00	0.00	0.00	0.00	0.00						
145	0.00	0.00	0.00	0.00	0.00	0.00	0.00	0.00	0.00	0.00	0.00	0.00						
150	0.00	0.00	0.00	0.00	0.00	0.00	0.00	0.00	0.00	0.00	0.00	0.00						
155	0.00	0.00	0.00	0.00	0.00	0.00	0.00	0.00	0.00	0.00	0.00	0.00						
160	0.00	0.00	0.00	0.00	0.00	0.00	0.00	0.00	0.00	0.00	0.00	0.00						
165	0.00	0.00	0.00	0.00	0.00	0.00	0.00	0.00	0.00	0.00	0.00	0.00						
170	0.00	0.00	0.00	0.00	0.00	0.00	0.00	0.00	0.00	0.00	0.00	0.00						
175	0.00	0.00	0.00	0.00	0.00	0.00	0.00	0.00	0.00	0.00	0.00	0.00						
180	0.00	0.00	0.00	0.00	0.00	0.00	0.00	0.00	0.00	0.00	0.00	0.00						

C Range: 0 - 360DEG  
C Interval: 30.0DEG  
Test Speed: HIGH  
Temperature:25.3DEG  
Operators:Zoe  
Test Date:2023-1-11

g Range: 0 - 180DEG  
g Interval: 1.0DEG  
Test System:EVERFINE GO-SPEX500\_V1 SYSTEM V2.00.416  
Humidity:65.0%  
Test Distance:3.160m [K=1.0000]  
Remarks: LAMP:CLU028-1204C4-303H5M3-F1 Ra:90  
REFLECTOR:AP-060D-WW  
DRIVER:PRO-UA440 1050mA  
30minutes warm-up